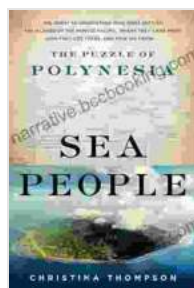


# Dive into the Enigmatic Sea People: Unveiling the Puzzle of Polynesia

In the vast expanse of the Pacific Ocean, far beyond the horizon, lies a captivating enigma: the Polynesian Triangle. This enigmatic region encompasses the islands of Polynesia, Melanesia, and Micronesia, each boasting a rich tapestry of vibrant cultures, enchanting landscapes, and a shared ancestry that has long puzzled scholars.

## The Seafaring Pioneers

The Polynesians, renowned for their unparalleled seafaring skills, embarked on extraordinary voyages across the unforgiving ocean. Guided by the stars, currents, and ancestral knowledge, they traversed vast distances in their ingeniously crafted canoes, conquering the treacherous waves and establishing communities on distant shores.



### Sea People: The Puzzle of Polynesia by Christina Thompson

★★★★☆ 4.6 out of 5

Language	: English
File size	: 24214 KB
Text-to-Speech	: Enabled
Screen Reader	: Supported
Enhanced typesetting	: Enabled
X-Ray	: Enabled
Word Wise	: Enabled
Print length	: 376 pages



## Tracing their Origins

The origins of the Polynesian people have captivated researchers for centuries. Archaeological evidence suggests that they sailed from Southeast Asia around 1500 BCE, but their precise point of departure remains shrouded in mystery. Linguistic studies, genetic analysis, and traditional oral histories offer tantalizing clues, pointing to a shared lineage with the Lapita people of Melanesia.

## **The Lapita Legacy**

The Lapita people, an ancient seafaring culture, flourished in the Pacific region from 1600 to 500 BCE. They left behind a trail of pottery shards, stone tools, and other artifacts that have shed light on their advanced navigational abilities and trading networks. Scholars believe that the Polynesians emerged from the Lapita culture, inheriting their seafaring traditions and expanding upon their ancestral knowledge.

## **Ingenious Navigators**

Polynesian voyagers relied on a combination of celestial navigation, wave patterns, and the behavior of birds and sea creatures to guide them across the open ocean. They developed precise star charts, meticulously observing the positions and movements of constellations. By interpreting the subtle changes in the sea, wind, and currents, they could determine their latitude and longitude with remarkable accuracy.

## **Extraordinary Canoes**

Their maritime prowess was further enhanced by their innovative canoe designs. These seafaring vessels were constructed from lightweight wood and featured outrigger hulls that provided stability in the turbulent waters.

The Polynesians' ability to build and navigate these intricate canoes enabled them to traverse vast distances and settle on remote islands.

## **Cultural Exchange and Adaptation**

As the Polynesians explored the Pacific islands, they encountered diverse environments and established contact with other cultures. From the fertile plains of Tahiti to the volcanic landscapes of Hawaii, they adapted their agricultural practices, social structures, and religious beliefs to suit the unique conditions of each new land.

## **Vibrant Cultures**

Over centuries of isolation, the Polynesian islands developed a rich spectrum of languages, traditions, and artistic expressions. From the elaborate tapa cloth of Samoa to the intricate tattoos of the Marquesas, Polynesian cultures showcase a kaleidoscope of human creativity and cultural heritage.

## **The Puzzle of Easter Island**

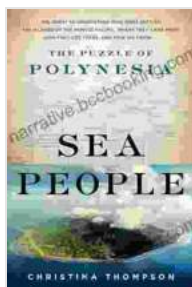
Among the most enigmatic of Polynesian islands is Easter Island, located thousands of miles away from its nearest neighbors. Famous for its colossal stone statues, or moai, Easter Island presents a particularly captivating puzzle to scholars. The question of how the Polynesians transported and erected these massive stone structures remains a subject of ongoing research and fascination.

## **Ongoing Exploration**

The allure of Polynesia continues to captivate explorers, scientists, and travelers alike. Archaeological expeditions, genetic studies, and linguistic analyses are constantly uncovering new insights into the origins, migrations, and cultural achievements of the Polynesian people.

---

The Sea People: The Puzzle of Polynesia is a testament to the indomitable spirit and extraordinary seafaring skills of the Polynesian people. From their Lapita ancestors to their long-distance voyages, the Polynesians have left an enduring legacy that continues to inspire and enchant. Their story serves as a reminder of the human capacity for exploration, adaptation, and cultural diversity.



### **Sea People: The Puzzle of Polynesia** by Christina Thompson

★★★★☆ 4.6 out of 5

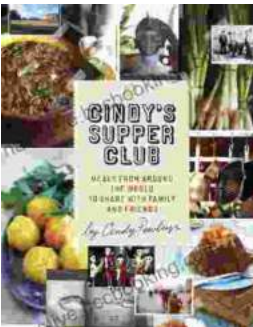
- Language : English
- File size : 24214 KB
- Text-to-Speech : Enabled
- Screen Reader : Supported
- Enhanced typesetting : Enabled
- X-Ray : Enabled
- Word Wise : Enabled
- Print length : 376 pages





## **Escape to the Culinary Paradise: "Truck Stop Deluxe In Napa Valley" Promises an Unforgettable Wine Country Adventure**

Prepare your palate for an extraordinary culinary adventure in the heart of Napa Valley. "Truck Stop Deluxe In Napa Valley" is an immersive journey through...



## **A Taste of the Unusual: Discover the Enchanting World of Cindy Supper Club**

Prepare to be captivated by "Cindy Supper Club," a literary masterpiece that transports you to an extraordinary realm of culinary delights and enigmatic encounters. Within its...