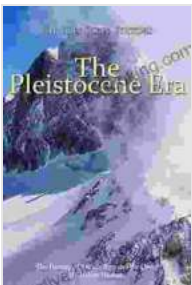


Unveiling the Enigmatic Epoch: A Comprehensive Journey through The History of the Ice Age and the Dawn of Modern Humans

The Ice Age, an enigmatic era characterized by profound climatic fluctuations and sweeping transformations, has left an enduring imprint on the fabric of our planet. This article delves into the captivating history of this remarkable period, exploring its origins, key events, and the profound impact it had on the evolution of our species.

The Birth of the Ice Age

The Ice Age, spanning over 2.5 million years, commenced with the onset of the Pleistocene epoch. During this time, a complex interplay of factors, including variations in Earth's orbit, solar insolation, and atmospheric composition, led to a gradual cooling trend. As temperatures plummeted, vast ice sheets began to accumulate at Earth's poles, heralding the advent of the Ice Age.



The Pleistocene Era: The History of the Ice Age and the Dawn of Modern Humans

by Charles River Editors

★★★★☆ 4.1 out of 5

Language : English
File size : 6848 KB
Text-to-Speech : Enabled
Screen Reader : Supported
Enhanced typesetting : Enabled
Word Wise : Enabled
Print length : 95 pages
Lending : Enabled



Fluctuations and Cycles

The Ice Age was not a continuous period of glacial expansion. Instead, it was punctuated by alternating periods of glacial advances and retreats, known as glacial and interglacial cycles. These cycles were driven by subtle shifts in the planet's climate, influenced by factors such as changes in solar activity and ocean currents.

During glacial periods, massive ice sheets crept across continents, carving landscapes and leaving behind telltale evidence of their passage.

Interglacial periods, on the other hand, brought respite from the icy grip, allowing vegetation to flourish and temperatures to rise.

Megafauna and Environmental Transformations

The Ice Age witnessed the rise and fall of a unique and diverse megafauna. Woolly mammoths, saber-toothed tigers, and giant ground sloths roamed the frozen landscapes, adapted to the harsh conditions. However, as the climate shifted and human populations grew, these magnificent creatures faced challenges and eventual extinction.

The Ice Age also brought about significant environmental transformations. Ice sheets scoured landscapes, creating U-shaped valleys, cirques, and moraines. Glacial meltwater carved out deep canyons, and vast inland lakes formed as ice retreated. These geological imprints remain as a testament to the profound impact of the Ice Age.

Human Adaptation and the Dawn of Modernity

The Ice Age posed immense challenges to our early human ancestors. Faced with a rapidly changing environment, they adapted and evolved, developing new technologies and cultural practices that enabled them to thrive in these harsh conditions.

Humans learned to harness fire, create sophisticated tools, and develop strategies for hunting and gathering in icy environments. These innovations marked a crucial step in human evolution, setting the stage for the development of complex societies and the dawn of modern humans.

Evidence and Legacy

The Ice Age has left behind a wealth of evidence that provides invaluable insights into this remarkable period. Ice cores, sediment deposits, and fossil records offer a glimpse into past climates, vegetation, and animal life. Archaeological discoveries, such as stone tools and cave paintings, shed light on the lives and adaptations of our early human ancestors.

The legacy of the Ice Age extends beyond its physical imprints. It shaped the distribution of human populations, the development of cultures, and the genetic diversity of our species. The environmental challenges and adaptations of this time continue to influence human society and our understanding of our place in the natural world.

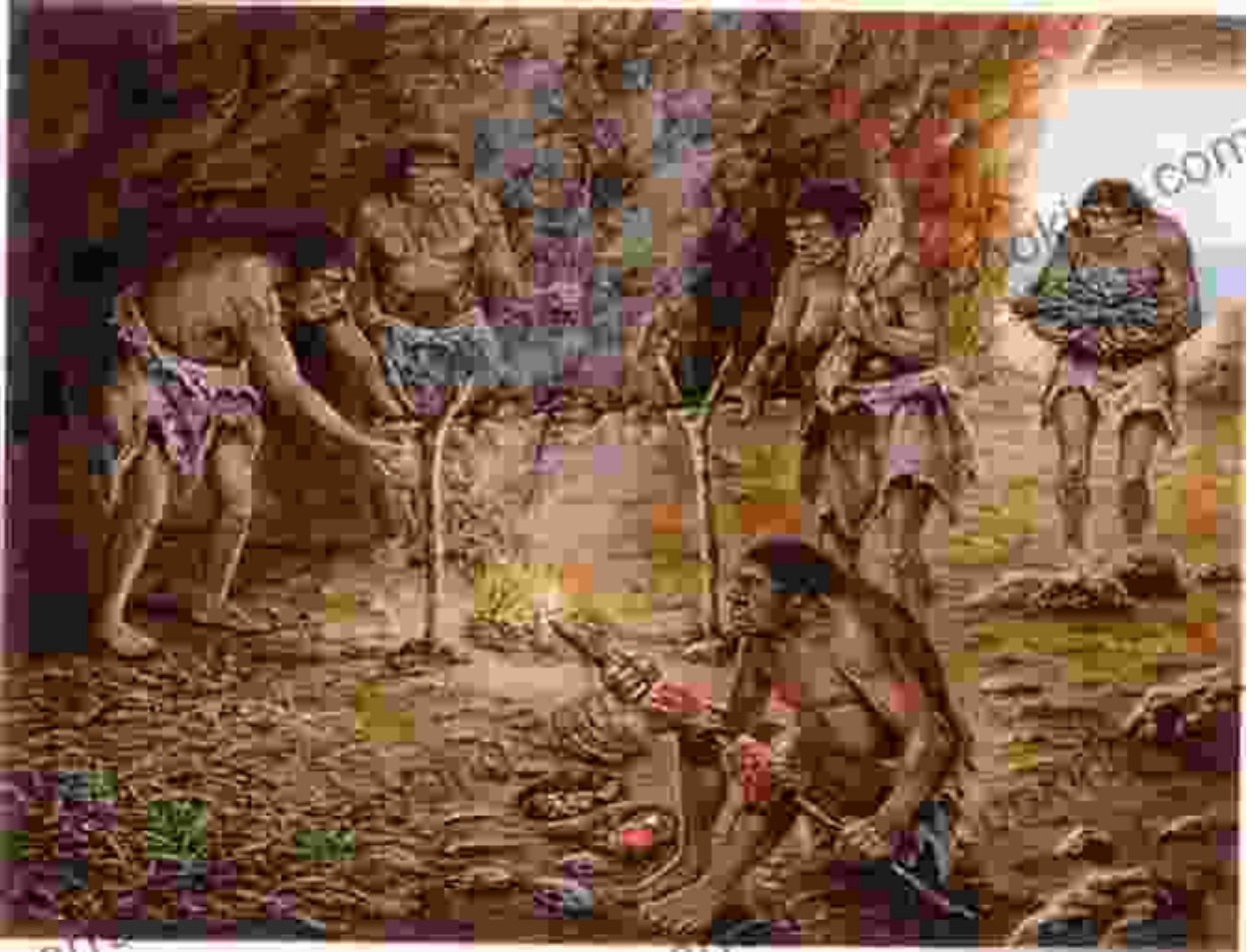
The History of the Ice Age and the Dawn of Modern Humans is a captivating exploration of one of the most transformative periods in Earth's history. It unravels the intricate interplay of climate, geology, biology, and human ingenuity that shaped our planet and our species.

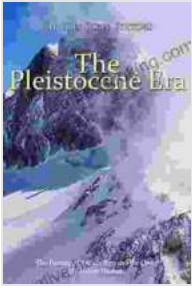
By delving into this remarkable epoch, we not only gain a deeper understanding of the past but also appreciate the profound implications it has had on our present and future. The Ice Age serves as a reminder of the Earth's dynamic nature, the resilience of life, and the enduring legacy of human adaptation and innovation.

Alt Attributes for Images





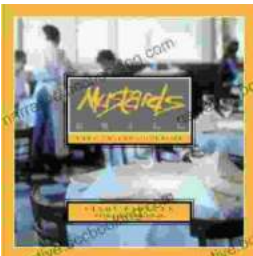




The Pleistocene Era: The History of the Ice Age and the Dawn of Modern Humans by Charles River Editors

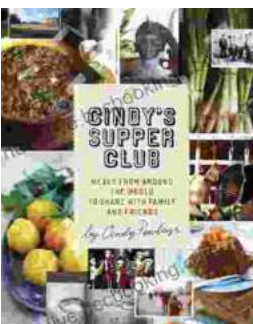
★★★★☆ 4.1 out of 5

Language : English
File size : 6848 KB
Text-to-Speech : Enabled
Screen Reader : Supported
Enhanced typesetting : Enabled
Word Wise : Enabled
Print length : 95 pages
Lending : Enabled



Escape to the Culinary Paradise: "Truck Stop Deluxe In Napa Valley" Promises an Unforgettable Wine Country Adventure

Prepare your palate for an extraordinary culinary adventure in the heart of Napa Valley. "Truck Stop Deluxe In Napa Valley" is an immersive journey through...



A Taste of the Unusual: Discover the Enchanting World of Cindy Supper Club

Prepare to be captivated by "Cindy Supper Club," a literary masterpiece that transports you to an extraordinary realm of culinary delights and enigmatic encounters. Within its...

