

Unveiling the Intricacies of Loss and Identity: A Comprehensive Study Guide to Kiran Desai's Acclaimed Novel, 'The Inheritance of Loss'

: A Journey into Loss and Identity

Kiran Desai's Booker Prize-winning novel, 'The Inheritance of Loss', is a poignant and thought-provoking exploration of the complexities of loss, identity, and the intricate tapestry of human relationships. This comprehensive study guide will delve into the novel's rich themes and characters, providing a deeper understanding of Desai's masterful storytelling and the profound impact of her work.

Chapter Summaries: Navigating the Heart of the Story

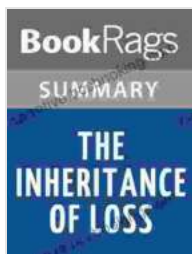
1. **Chapter 1:** Introduces the novel's main characters, Sai and Jemubhai, and their shared history. It sets the stage for the novel's exploration of loss and the search for identity.
2. **Chapter 2:** Sai's journey to Kalimpong is filled with unexpected encounters and a growing sense of displacement. The chapter examines the impact of isolation and the search for belonging.
3. **Chapter 3:** Jemubhai's story unfolds, revealing his complex relationship with his daughter and the profound loss he has endured. The chapter explores the themes of grief and the resilience of the human spirit.
4. **Chapter 4:** Sai and Jemubhai's paths intertwine in unexpected ways. The chapter examines the dynamics of their relationship and the

challenges they face in navigating the complexities of loss.

5. **Chapter 5:** The final chapter brings closure to the novel's central themes. It explores the power of forgiveness, the acceptance of loss, and the ultimate triumph of the human spirit.

Character Analysis: The Embodiments of Loss and Identity

Sai



Summary & Study Guide The Inheritance of Loss by

Kiran Desai by Charlotte Browne

★★★★☆ 4.7 out of 5

Language : English
File size : 170 KB
Text-to-Speech : Enabled
Screen Reader : Supported
Enhanced typesetting : Enabled
Word Wise : Enabled
Print length : 54 pages

Lending

: Enabled

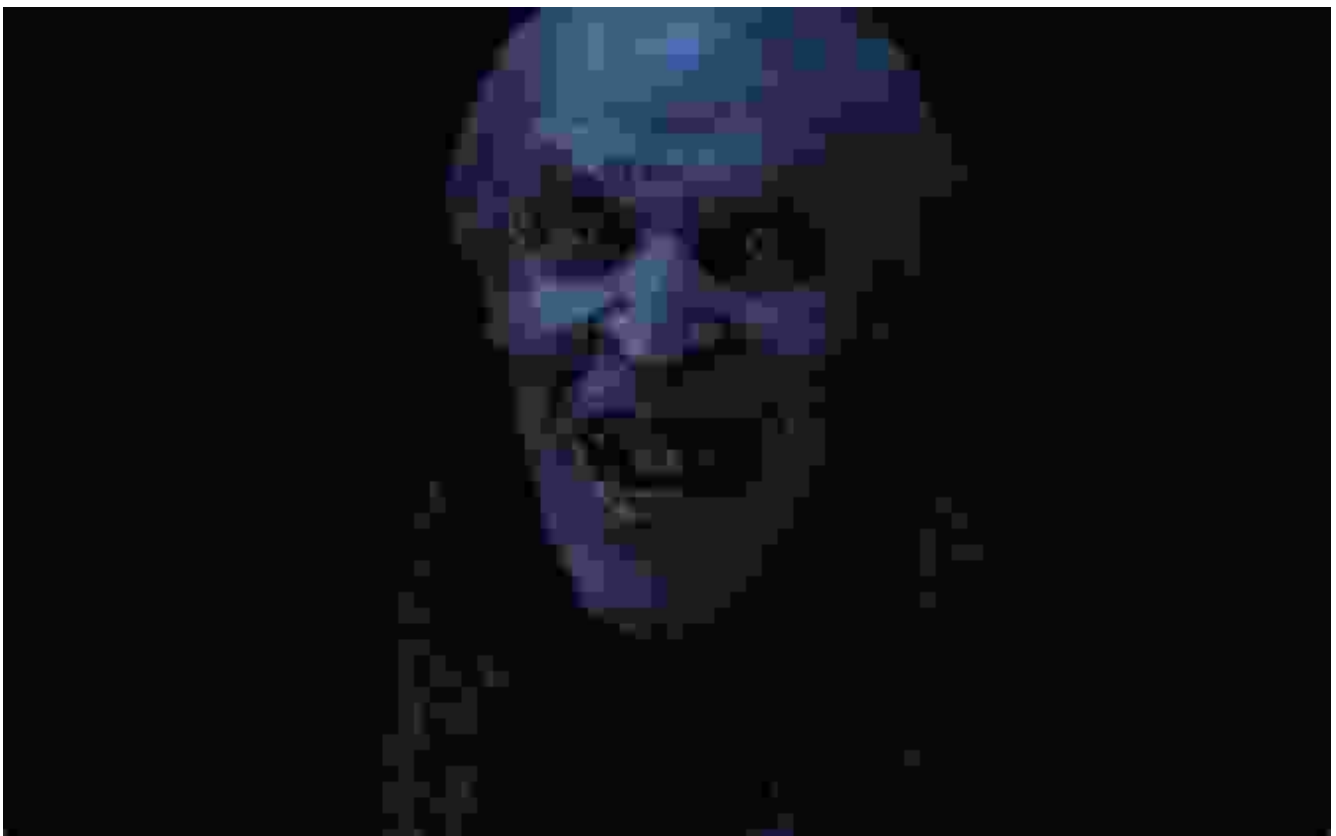
FREE

DOWNLOAD E-BOOK



Sai is a complex and multifaceted character who embodies the novel's central themes. She is a young woman who has lost both her parents and struggles to find her place in the world. Her journey is one of self-discovery and the search for a sense of belonging.

Jemubhai



Jemubhai, an elderly man haunted by the loss of his daughter

Jemubhai is a retired judge who has lost his daughter in a tragic accident. He is a deeply wounded man who struggles to come to terms with his loss. His story is a poignant exploration of the complexities of grief and the power of memory.

Themes: Loss, Belonging, and the Human Spirit

'The Inheritance of Loss' delves into various profound themes that resonate with readers on a deep level:

Loss and Grief:

The novel explores the profound impact of loss on individuals and their search for meaning amidst pain.

Belonging and Identity:

The characters navigate the complexities of identity and their struggle to find a sense of belonging in a rapidly changing world.

Resilience and Healing:

Despite the overwhelming challenges they face, the characters exhibit resilience and a remarkable capacity for healing and growth.

The Power of Forgiveness:

The novel examines the transformative power of forgiveness and its ability to liberate individuals from the shackles of the past.

Literary Analysis: Exploring Desai's Narrative Techniques

Desai's writing is characterized by its poetic prose, lyrical descriptions, and subtle symbolism. The study guide examines these techniques in detail,

providing insights into the author's craft:

Poetic Prose:

Desai's use of language is rich and evocative, creating vivid sensory experiences for the reader.

Lyrical Descriptions:

Nature plays a significant role in the novel, and Desai's descriptions are often infused with lyrical beauty.

Symbolism:

Objects, colors, and recurring motifs carry symbolic meanings, adding depth to the narrative.

Study Questions: Engaging with the Text

To facilitate a deeper understanding of the novel, the study guide includes a series of thought-provoking study questions that prompt readers to:

Analyze Character Motivations:

Explore the motivations and actions of Sai and Jemubhai, considering their psychological depth and complexity.

Examine Thematic Symbolism:

Identify and interpret the symbolic elements in the novel and their significance to the overall themes.

Discuss Narrative Structure:

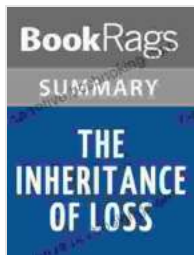
Analyze the novel's narrative structure, including the use of flashbacks and multiple perspectives.

Compare and Contrast Characters:

Compare and contrast the characters of Sai and Jemubhai, highlighting their similarities and differences.

: The Enduring Legacy of 'The Inheritance of Loss'

Kiran Desai's 'The Inheritance of Loss' is a profound and moving novel that continues to resonate with readers long after they finish the last page. This study guide offers a comprehensive analysis of the novel's themes, characters, and literary techniques, providing essential insights for students, scholars, and book clubs. Through its in-depth exploration, the guide aims to enrich the reading experience and foster a deeper appreciation for Desai's masterful storytelling.



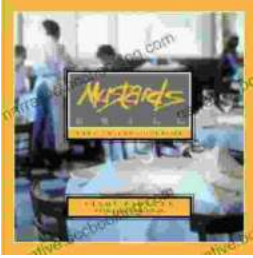
Summary & Study Guide The Inheritance of Loss by

Kiran Desai by Charlotte Browne

★ ★ ★ ★ ☆ 4.7 out of 5

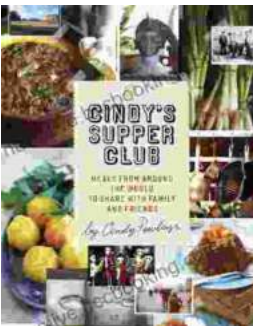
- Language : English
- File size : 170 KB
- Text-to-Speech : Enabled
- Screen Reader : Supported
- Enhanced typesetting : Enabled
- Word Wise : Enabled
- Print length : 54 pages
- Lending : Enabled





Escape to the Culinary Paradise: "Truck Stop Deluxe In Napa Valley" Promises an Unforgettable Wine Country Adventure

Prepare your palate for an extraordinary culinary adventure in the heart of Napa Valley. "Truck Stop Deluxe In Napa Valley" is an immersive journey through...



A Taste of the Unusual: Discover the Enchanting World of Cindy Supper Club

Prepare to be captivated by "Cindy Supper Club," a literary masterpiece that transports you to an extraordinary realm of culinary delights and enigmatic encounters. Within its...